



DECEMBER WEEKENDS



SATURDAY

5th Christmas Youth Market @ Waratah

Have a relaxing afternoon enjoying live music and browsing a variety of products including candles, scrunchies, artwork and jewellery. Food and drinks available. 12:30pm- 5pm. *Free entry+Spending\$*

12th Cats & Dogs 3: Paws Unite @ Civic Cinema

Gwen the Cat and Roger the Dog are secret agents who covertly protect and save the world without humans ever finding out.

12:30pm- 4:30pm. *\$15 + Lunch*



19th Christmas Shopping + Lunch @Kotara

Need to do last minute Christmas present shopping? Lets do it together 😊

10.30am- 2.30pm. *Lunch \$ +Spending \$ optional*

26th CLOSED FOR XMAS LONG WEEKEND



SUNDAY

6th Special Exhibition - COLOUR @ Newcastle Museum.

See colour as you've never seen it before! The exhibition was developed by Questacon. Find out if your yellow the same as mine? How do pixels and paint differ? 12pm - 4pm *\$7 + Lunch \$*

13th Christmas Movie & Dinner @ 4u Hub

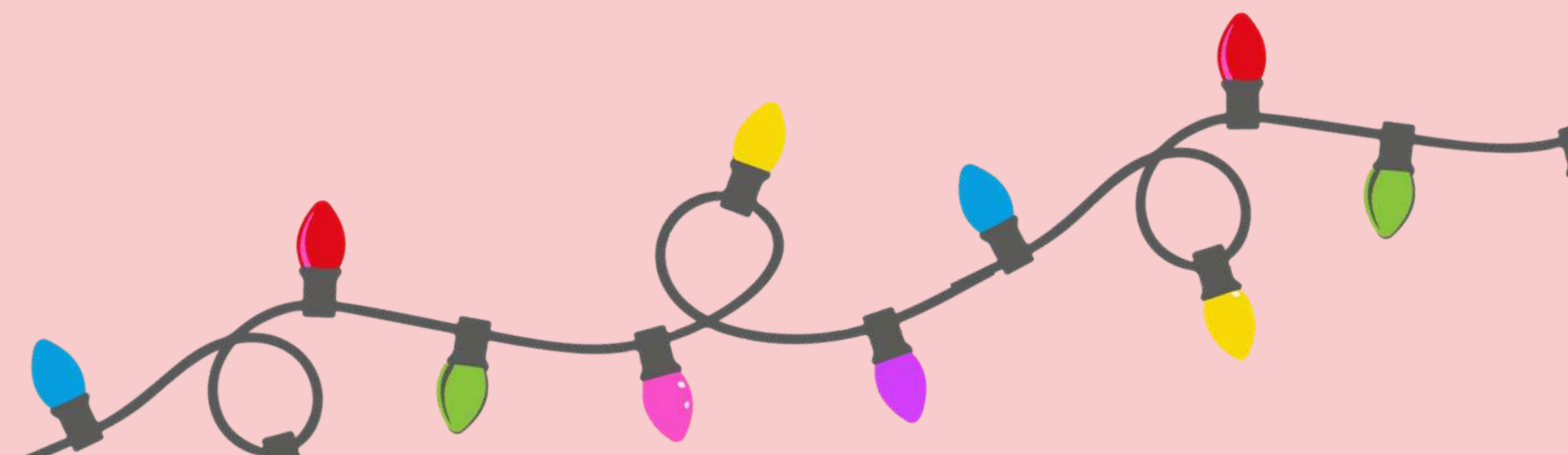
Let's face it, classics are classics because they're the best. Come and watch one of the Christmas Classic's while enjoying a delicious dinner.

5pm - 9pm *\$10 - \$Dinner*

20th Christmas Light Tour & Dinner

Come and be amazed at some of the local Christmas Light displays, while of course listening to all of your favourite carols. 5pm - 9pm *Dinner \$*

27th CLOSED FOR XMAS LONG WEEKEND





IMPORTANT INFORMATION



All activities will be carried out in compliance with restrictions and practicing the highest level of safety possible.

Pick up/ Collection - from 4u Care Hub – 8 Bean St, Wallsend, unless specified otherwise.

Cost- “Support Time” costs will vary depending on booking numbers, with the per hour cost being based on 1:1, 1:2, 1:3, 1:4 or 1:5 ratios.

(These prices are reflected in the NDIS Price Guide.)

- Where a day has an extra cost – we ask that this cost is paid in cash on arrival.

Transport - Private staff/business vehicles will be used, with transport cost (85c in a carer vehicle and \$1.30 if a 4u Van is being used), to be split between all participants booked in for the day.

Please remember to bring: Water bottle, packed lunch (or money to buy), enclosed shoes, hat, sunscreen, opal card, companion card and positive vibes.

Wet Weather - If an organised activity can not go ahead due to weather, an alternate activity will be arranged. If possible, prior notification will be given. These activities may include indoor sports, trampolining, movies, ten pin bowling, laser tag or a lunch outing.

